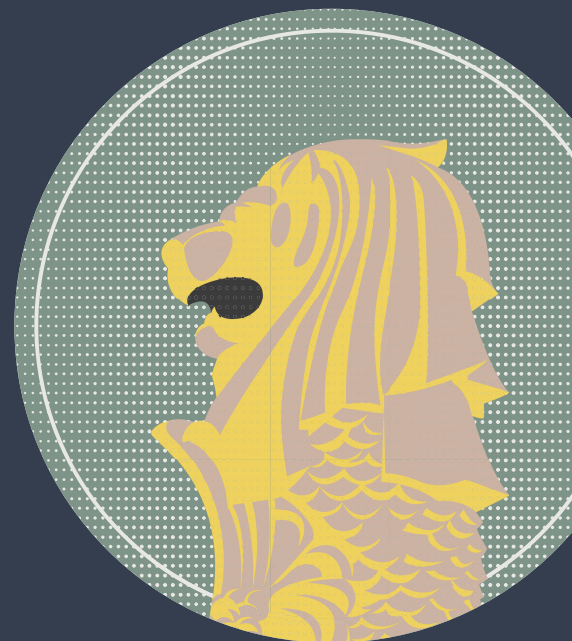


Guide for Foreigners Relocating to Singapore

Moving abroad is always daunting. There are so many factors to consider – where do you even begin? In this guide, we summarize the key information you'll need to know before deciding to relocate to Singapore.



Types of Passes in Singapore

The types of passes available are divided into several main categories according to your profile and purpose of visit. These are the main categories: **professionals, skilled and semi-skilled workers, trainees and students, and family members.**

1

Professionals

- Employment Pass
- EntrePass
- Personalised Employment Pass
- Overseas Networks & Expertise Pass

2

Skilled Workers

- S Pass
- Work Permit for Performing Artists
- Work Permit for Foreign Workers
- Work Permit for Foreign Domestic Workers
- Work Permit for Confinement Nannies

3

Students

- Training Employment Pass
- Work Holiday Pass
- Work Holiday Pass (Under Work and Holiday Visa Programme)
- Training Work Permit

4

Family Members

- Dependant's Pass
- Long Term Visit Pass
- Pre-approved Letter of Consent
- Letter of Consent for ICA-issued LTVP/LTVP+ Holders
- Letter of Consent for Dependant's Pass holders who are business owners

5

Exemptions and working while on a visit pass

- Miscellaneous Work Pass
- Work Pass Exempt Activities
- Work pass exemption for foreign students
- Work passes for holders of Long-Term Visit Passes issued by ICA



Types of Property Available

In Singapore, both renting and purchasing of properties are available options to foreigners looking to relocate here. When it comes to renting, there are no restrictions – regardless of whether the property is private or public. However, public housing owners are not permitted to rent out their property unless they've met a minimum 5-year occupancy period. So before committing to a lease, make sure that they have met this criteria!

Property Type	What Singapore PRs can buy	What Non-Singaporean PRs can buy
Resale HDB Flats	Yes (with another SPR or SC)	No
Resale Executive Condominiums (ECs)	Yes (that have reached their 5-year MOP)	No
Private ECs	Yes	Yes
Private Condos	Yes	Yes
Strata-landed houses	Yes	No
Landed Properties in Sentosa Cove	Yes	Yes
Private landed properties	Yes (with special permission from Singapore Land Authority)	Yes (with special permission from Singapore Land Authority)

Additional Costs

On top of usual taxes, most foreigners pay an added stamp duty in the form of the Additional Buyers Stamp Duty (ABSD) which is an added tax of 25% of your property price, payable within 2 weeks of completing the purchase of any property

If you are a US National or a National or Permanent Resident from Switzerland, Liechtenstein, Norway and Iceland, you will pay the same tax rates as a Singapore citizen.

Schooling Options

Government Schools

Children must be Student's Pass holder and go through the International Student Admissions process in order to be admitted into public schools governed by the Ministry of Education (MOE).

Foreign students are welcome to join public schools. However, they can expect to be put on a waitlist if the number of locals applying is high.



The Academic Year runs from January to December. There are holidays in September, December, March, and June.

Private/International/Boarding Schools

Annual school fees can range from S\$13,000 to S\$50,000, excluding application and other administrative fees.

The academic year is determined by the school itself. The most popular academic calendar is August to July, which aligns with northern hemisphere schools.

The Top 4 Most Popular Schools

1. Hwa Chong Institution Boarding School
2. United World College South East Asia
3. Raffles Institution Boarding
4. Anglo-Chinese School



Private Schools for Different Nationalities



Australia

Australian International School
Singapore

Europe

German Europe School Singapore
International French School
Tanglin Trust School
Dover Court International School

United States of America

Stamford American International
School
Singapore American School

Korea

Singapore Korean International School

India

Global Indian International School

Japan

Waseda Shibuya Senior High School

Healthcare Options

Foreigners are not entitled to subsidised healthcare services from the government. Hence, they prefer private healthcare due to the shorter waiting time and higher quality service.

Government Healthcare Facilities

- Government Hospitals for inpatient services
- Polyclinics for outpatient services

Private Healthcare Facilities

- Private Hospitals (JCI-accredited)
- Private clinics

Service	Cost
Routine Check-ups with a General Practitioner, with medication	\$20-\$40
Blood tests and X-Rays	\$50-\$80
Specialised Consultation in a Private Clinic	\$75-\$125
Hip Replacement Surgery	\$13,000
Knee Replacement Surgery	\$15,000
Heart Bypass Surgery	\$25,000



Private Hospitals	Government Hospitals
Farrer Park Hospital	Alexandra Hospital
Concord International Hospital	Changi General Hospital
Gleneagles Hospital	Khoo Teck Puat Hospital
Mount Alvernia Hospital	KK Women's & Children Hospital
Mount Elizabeth Novena Hospital	Ng Teng Fong General Hospital
Mount Elizabeth Hospital	National University Hospital
Parkway Easy Hospital	Singapore General Hospital
Raffles Hospital	Tan Tock Seng Hospital
Thomson Medical Centre	Singapore National Eye Centre
	Singapore Cancer Centre
	Singapore Heart Centre
	National Skin Centre



Popular Areas for Expats to Live

Orchard Road

- Heart of retail shopping
- Wide variety of restaurants, cafes, and eateries
- Recreational facilities and services
- Very close to the CBD area

Tanglin

- Wide range of housing options available
- Near to Orchard Road
- Near to Botanic Gardens

Holland Village

- Many cafes, ice cream, and dessert parlours
- Myriad of health and beauty services
- Filled with bars and pubs
- Local and Western restaurants where many expatriates like to gather and hang out at
- Wide range of housing options available
- Is an MRT station

Changi Business Park

- A mixture of tech, data and software enterprises
- Research and Development-intensive facilities
- Easy access to the CBD via Expo MRT

East Area

Bedok, Tampines, Flora Drive, Siglap

- Has a community village spirit
- Wide range of local and western restaurants
- Recreational facilities and services
- Wide range of housing options available

Central Business District

Anson Road, Chinatown, Neil Road, Raffles Place, Shenton Way, Tanjong Pagar

- The business district, filled with office buildings
- High-end restaurants, bars and cafes catering to the corporate crowd

South West Area

Buona Vista, Pasir Panjang, Clementi, Dover, Bukit Timah

- Houses many top schools from primary, secondary, and tertiary-level institutes
- Neighbourhood malls
- Key amenities and recreational facilities
- Wide range of restaurants and 24-hour eateries
- Wide range of housing option available

Sentosa

- Best neighbourhood feel
- Great access to recreational activities such as golfing and playing at the beach
- Near to attractions like Resort World Sentosa and Universal Studios Singapore
- Right next to VivoCity, Singapore's largest mall
- Convenient for those who work in CBD



Discover Singapore

Singapore may be a little red dot, but there's so much about the island to discover and explore – if only you knew where. So here's an exciting list of things to do and places to see!

Nature Traits

These trails are great for exploring, hiking, exercising, and simply seeing the natural landscape that Singapore has to offer.

Bring a friend or make one along the way!

- 1 Botanic Gardens
- 2 MacRitchie Reservoir
- 3 Sungei Buloh Wetlands
- 4 Singapore Zoo & River Safari
- 5 Punggol Waterway Park
- 6 Coney Island
- 7 Pulau Ubin

Cultural Landmarks

Singapore's deep history and heritage can't just be explored over a weekend. Head down to these different sights to immerse in the local melting pot of people from all walks of life!

- 1 Chinatown
- 2 Little India
- 3 Kampong Glam
- 4 Kampong Buangkok
- 5 Haw Par Villa
- 6 Clarke Quay & Boat Quay
- 7 Marina Bay Sands

