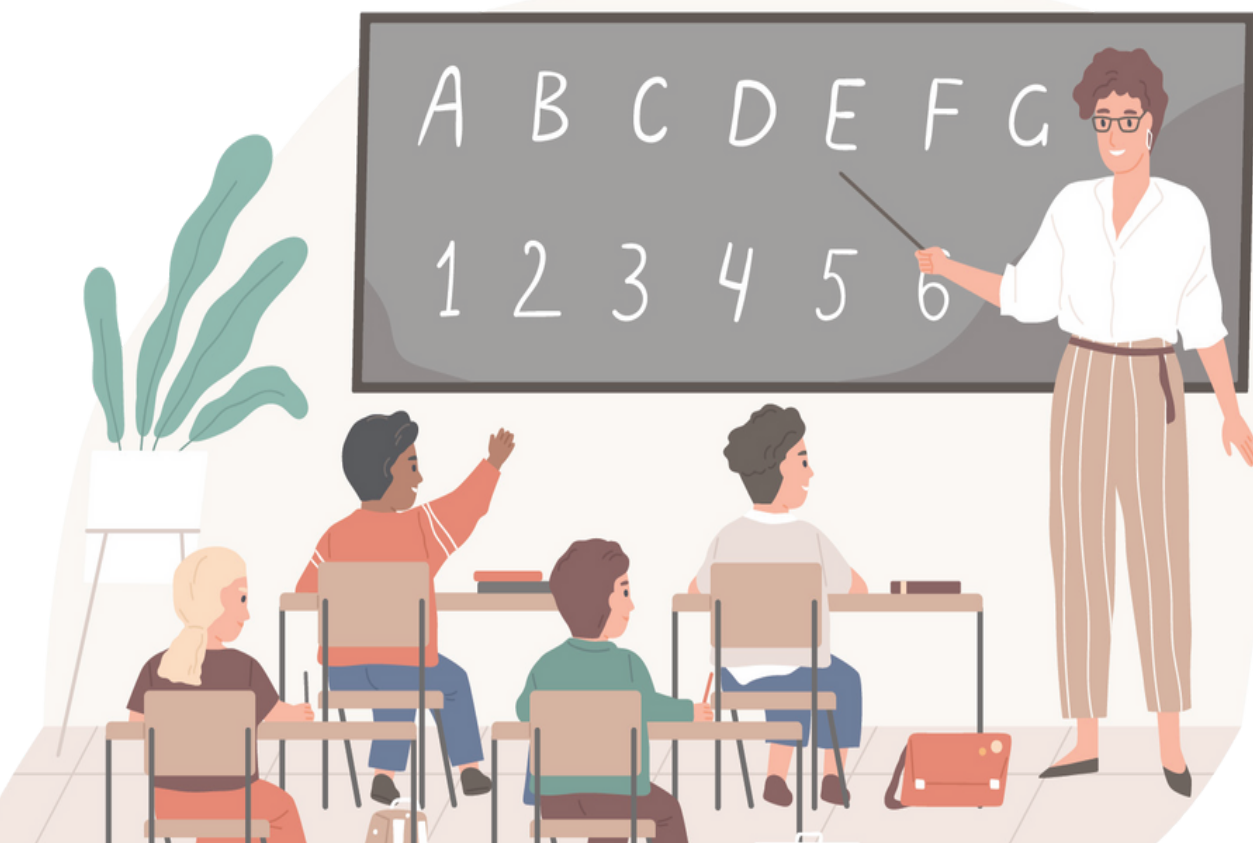




A Guide to Education in Singapore



Admission Into Schools

Public Schools

All international students who wish to seek admission to the Primary 1 level of a mainstream primary school are required to undergo the P1 Registration Exercise. Read more [here](#).

International students seeking admissions to Primary 2 to 5 and Secondary 1 to 3 in the **following** academic year, must sit for the **Admissions Exercise for International Students (AEIS)**.

The AEIS typically starts in July. Successful applicants start school in January the following year.

International students seeking admission to Primary 2 to 4 and Secondary 1 to 2 in the **same** academic year, must sit for the the **Supplementary Admissions Exercise for International Students (S-AEIS)**.

The S-AEIS typically starts in January. Successful applicants start school in April or May.

Private Schools

International students who wish to seek admission to a pre-school, private international school or post-secondary institution (e.g. university or polytechnic) should approach the pre-school, private school or institution directly.

Student's Pass

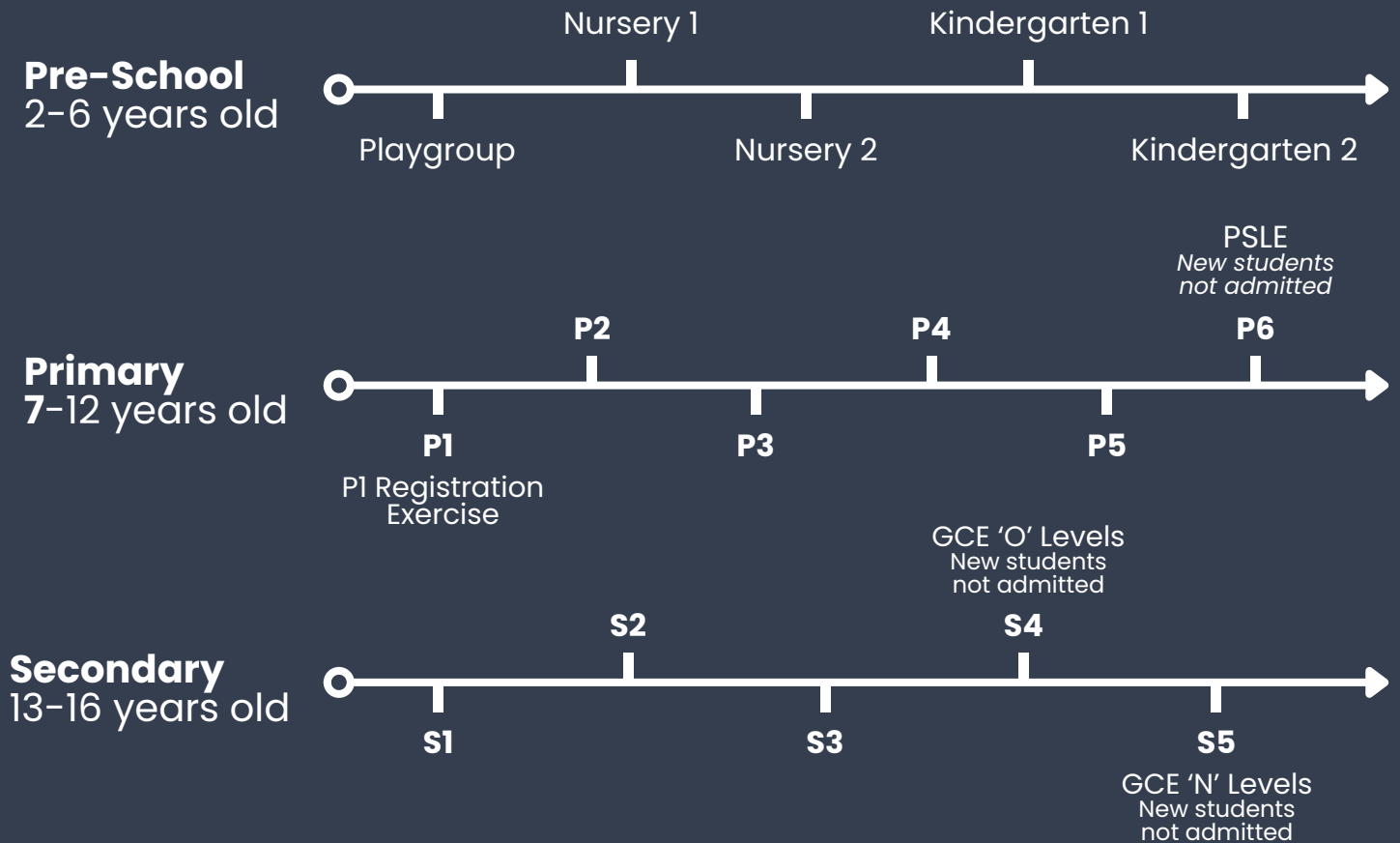
International students who wish to study in a public, government-aided or private school require a Student's Pass, unless they are a holder of a Long-Term Visit Pass (LTVP), Dependant's Pass (DP), an Immigration Exemption Order (IEO),

English is the medium of instruction. International students are encouraged to prepare for the centralised test. They should be familiar with the English and Mathematics syllabuses of the level preceding the one they are applying for.

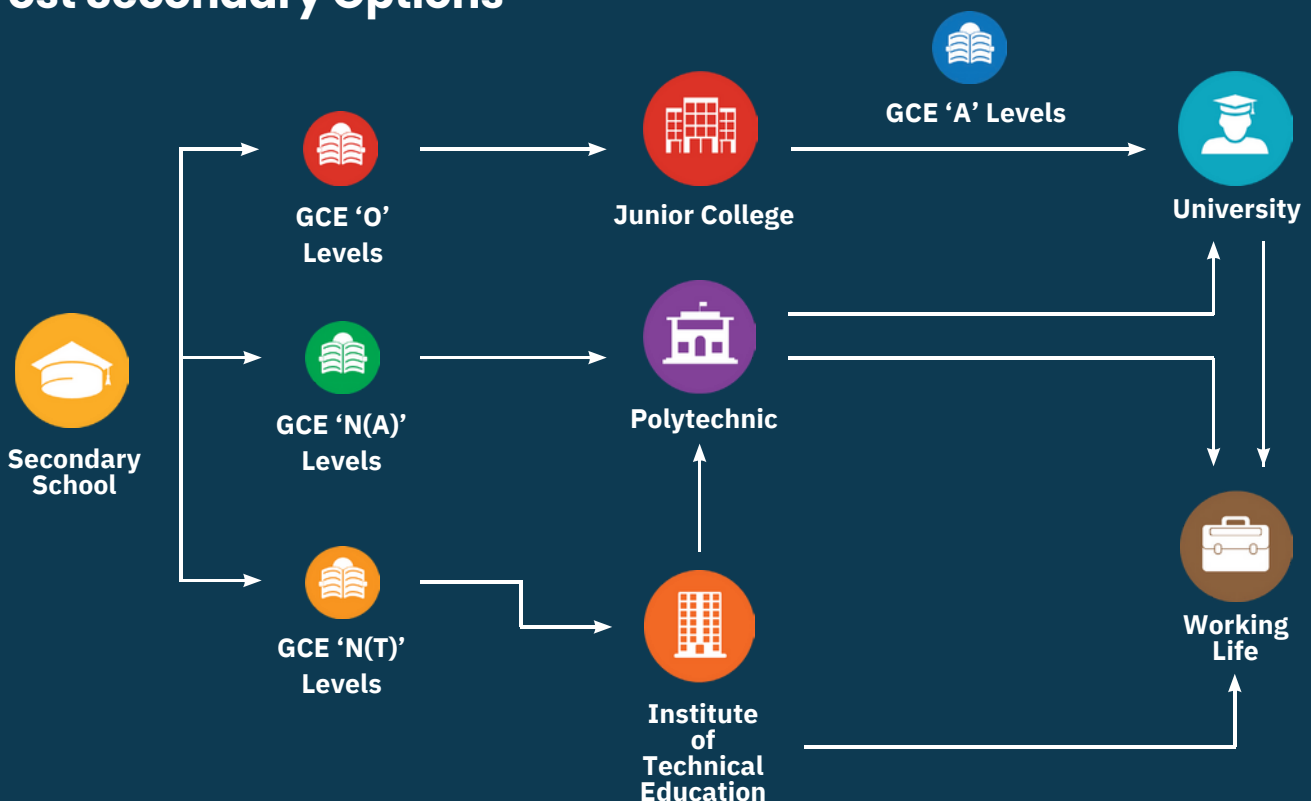


Curriculum Breakdown

Public Schools



Post Secondary Options



Junior Colleges

Anderson Serangoon Junior College
Anglo-Chinese Junior College
Catholic Junior College
Hwa Chong Institution
Tampines Meridian Junior College Millennia Institute
Nanyang Junior College
National Junior College
Jurong Pioneer Junior College
St. Andrews Junior College
Temasek Junior College
Victoria Junior College
Yishun Innova Junior College

Polytechnics

Ngee Ann Polytechnic
Nanyang Polytechnic
Republic Polytechnic
Singapore Polytechnic
Temasek Polytechnic

Universities

National University of Singapore (NUS)
Nanyang Technological University (NTU)
Singapore Management University (SMU)
Singapore University of Technology and Design (SUTD)
Singapore Institute of Technology (SIM)
Singapore University of Social Sciences (SUSS)

Junior College vs Polytechnic

	Junior College	Polytechnic
Duration of Study	2 years	3 years
Cost	\$6 - \$2,127 (per month)	\$3000 - \$12,000 (annually)
Transportation Fee	Student Fare	Adult Fare
Attire	Uniform	No Uniform
Average Workload per Week	~40 hours Academically rigorous. Independent textbook studying with intense examination periods	~25 hours Group projects, Hands-on projects to prepare students for workforce
Courses and Subjects	General Paper Project Work Mathematics Physics, Chemistry, Biology, History, Geography, Economics	Highly specialised courses designed to equip students with real-life skills Eg. Biomedical Engineering, Mass Communication



Private International Schools

Curriculum and Level Breakdown

The curriculum and level breakdown varies greatly between each international school depending on nationality and its curriculum available. Here are some of the more popular curriculum and the schools that offer it

General Certificate of Secondary Education (GCSE)

Australian International School
Dover Court International School
Dulwich College (Singapore)
EtonHouse International Schools
Marlborough College Malaysia
One World International School
Tanglin Trust School
The Winstedt School

International General Certificate of General Education (IGCSE)

Australian International School
Dover Court International School
Dulwich College (Singapore)
GEMS World Academy (Singapore)
Global Indian International School
Marlborough College Malaysia
Nexus International School (Singapore)
One World International School
Tanglin Trust School
UWC South East Asia

International Baccalaureate (IB)

Australian International School
Canadian International School
Chatsworth International School
Dulwich College (Singapore)
EtonHouse International School and Preschool
GEMS World Academy (Singapore)
GESS
Global Indian International School
Hillside World Academy
ISS International School
Marlborough College Malaysia
Nexus International School (Singapore)
One World International School
Overseas Family School
Stamford American International School
Tanglin Trust School
UWC South East Asia



Private Schools for Different Nationalities



Australia

Australian International School
Singapore

Europe

German Europe School Singapore
International French School
Tanglin Trust School
Dover Court International School

United States of America

Stamford American International
School
Singapore American School

India

Global Indian International School

Korea

Singapore Korean International School

Japan

Waseda Shibuya Senior High School

Cost of Local Schools for Foreigners

Level	Nationality	Total Monthly Fee
Primary	Singapore PR	\$230-\$268
	International Student (ASEAN)	\$490-\$528
	International Student (Non-ASEAN)	\$825-\$888

Secondary	Singapore PR	\$440-\$520
	International Student (ASEAN)	\$840-\$920
	International Student (Non-ASEAN)	\$1,600-\$1,770
Pre-University		
Junior College	Singapore PR	\$520-\$607
	International Student (ASEAN)	\$1,070-\$1,127
	International Student (Non-ASEAN)	\$1,950-\$2,127
Polytechnic	Singapore PR	\$6,200 (annually)
	International Student	\$12,000 (annually)
Institute of Technical Education (ITE) - NITEC	Singapore PR	\$6,542 (annually)
	International Student	\$18,562 (annually)
Institute of Technical Education (ITE) - Higher NITEC	Singapore PR	\$7,852 (annually)
	International Student	\$20,852 (annually)



Cost of International Schools

Pre-University AY2024/2025		
Global Indian International School	Central Board of Secondary Education (Nursery - Grade 12)	\$4972 - \$10445 (per term)
	Cambridge Lower Secondary Programme	\$10066 - \$11681 (per term)
	IB Primary Years Programme (Grade 1 - 5)	\$9353 - \$9532 (per term)
	IB Diploma Programme Y1	\$12491 (per term)
	IB Diploma Programme Y2	\$12577 (per term)
Stamford American International School	Pre-Nursery and Nursery	\$18,499 - \$28,455 (annually)
	Pre-Kindergarten	\$23,470 - \$36,300 (annually)
	Kindergarten 1	\$28,890 - \$42,612 (annually)
	Kindergarten 2	\$43,551 (annually)
	Elementary School	\$43,756 (annually)
	Middle School	\$47,475 (annually)
	High School	\$49,561 (annually)

Tanglin Trust School	Application Fee	\$1000 (per application)
	Enrolment Fee	\$3,500 (per application)
	Capital Levy	\$4,500 (per student)
	Infant School	\$10,663 – \$13,356 (per term)
	Junior School	\$13,980 (per term)
	Middle School	\$15,770 (per term)
	Upper School	\$16,510 (per term)
	Sixth Form	\$17,115 (per term)
Stamford American International School	Application Fee – Day Student (per campus, per application)	\$627
	Application Fee – Boarding Student (available from Grade 8, per application)	\$841
	Enrolment Fee (one-time)	\$4,946
	K1 – Grade 1	\$44,023 (per term, first year) \$39,515 (per term, subsequent years)
	Grade 2 – Grade 5	\$45,020 (per term, first year) \$40,511 (per term, subsequent years)
	Grade 6 – Grade 10	\$51,696 (per term, first year) \$47,187 (per term, subsequent years)
	Grade 11 – Grade 12	\$53,839 (per term, first year) \$49,331 (per term, subsequent years)

Overseas Family School	Registration Fee	\$2000 (per student, all levels)
	Pre-Kindergarten - K2	\$14,200 - \$16,200
	Elementary (Grade 1-5)	\$17,550
	Middle School (Grade 6-8)	\$18,750
	High School (Grade 9-12)	\$21,100 - \$22,400

